

Corte Zari®

Poltrone
Armchairs

BOTERO

Design Archirivolto



La poltrona Botero è caratterizzata da forme sontuose, dolci e morbide che trasmettono senso di comodità e tranquillità senza pari. In pianta, di profilo, la linea a nastro del bracciolo, la struttura ascendente dello schienale e il tavolino laterale in legno, evidenziano la sua natura dinamica disegnata.

Botero armchair is featured by lavish, soft and curvy shapes, expressing an incredible feeling of comfort and peace. Both on plant and on the outline, the line is designed to instill relax. The tapered line of the metal armrest, the rising shape of the backrest and the side wooden table outline its dynamic and designed nature.

Dati tecnici
Technical data

BOTERO

Design Archirivolto



Struttura in metallo calandrato e piegato a mano
Servomuto integrato in mdf.

Seduta con struttura in listellare di pioppo, imbottita in poliuretano espanso indeformabile a densità variabile rinforzata da cinghie elastiche intrecciate.

Art. 739 Schienale a 3 cuscini in piuma d'oca e rollofill.

Art. 739-B Schienale a 1 cuscino in piuma d'oca e poliuretano espanso indeformabile a densità variabile.

Rivestimenti in tessuto, pelle o eco-pelle.

Dimensioni

cm 126 x 98 x 86 h

Iron calendared and hand bent structure.

Side mdf table.

Seat framework in poplar blockboard with sprung reinforced by interwoven elastic belts. Padding with non-deformable expanded polyurethane of differentiated density.

Art. 739 Three cushions backrest padded in goose down and rollofill.

Art. 739-B One cushion backrest padded in goose down and non-deformable expanded polyurethane of differentiated density.

Upholsteries in fabric, leather or eco-leather lining.

Dimensions

cm 126 x 98 x 86 h

Mood

BOTERO

Design Archirivolto



^
Struttura finitura *Structure finish*: Palladio n° 89
Seduta pelle *Seat leather*: Colvert 692
Schienale tessuto *Backrest fabric*: Magritte L1635-12
Structure palladio finish n°89
Seat Colvert leather 692
Backrest Magritte fabric L1635-12

^
Struttura finitura *Structure finish*: Palladio n° 89
Seduta pelle *Seat leather*: Colvert 692
Schienale 80 e 50 tessuto *Backrest 80 and 50 fabric*: Nobilis L1640-23
Schienale 60 tessuto *Backrest 60 fabric*: Magritte L1635-12
Structure palladio finish n°89
Seat Colvert leather 692
Backrest 50 and 60 Nobilis fabric L1640-23
Backrest 60 Magritte fabric L1635-12

Rivestimenti suggeriti
Suggested upholsteries

BOTERO

Design Archirivolto

Pelli **Leathers**



Nabuk 6 fumo
cat. Vip



692 Colvert
cat. Glam



Atmosfera 762
cat. Glam



9114 Luxor Quarzo
cat. Glam

Ecopelli **Eco-leathers**



Deus 1204 fumo
cat. Gold



Deus 1211 lichene
cat. Gold



Deus 1232 cipria
cat. Gold



Nabuk 7508-19
cat. Eco



Rebel n.17
cat. Eco



Extrema Au Metal 5150
cat. Eco



Bloom 14
cat. Eco



Extrema Au Metal 5950
cat. Eco



Rebel n.13
cat. Eco

Per campionario completo delle **pelli** clicca [qui](#)
Visit a full **leathers** set click [here](#)

Per campionario completo delle **ecopelli** clicca [qui](#)
Click [here](#) to visit the whole **eco-leathers** sample set

Rivestimenti suggeriti
Suggested upholsteries

BOTERO

Design Archirivolto

Tessuti **Fabrics**



Nobilis L1340-16
cat. G



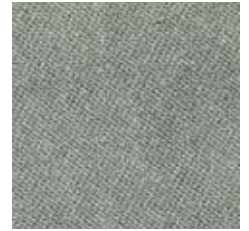
Nobilis L1340-21
cat. G



Nobilis L1340-22
cat. G



Nobilis L1340-04
cat. G



Prestige L 1552-33
cat. E



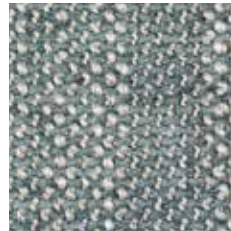
Prestige L1552-26
cat. E



Le Fate L1593-21
cat. E



Le Fate L1593-23
cat. E



L1635-12
cat. G



Nobilis L1340-23
cat. G



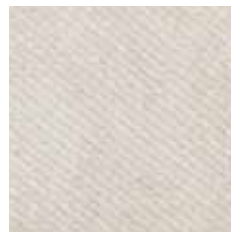
Signoria 7100-22
cat. H



Signoria 7100-04
cat. H



Imperia L1510-02
cat. E



Cassiopea 1033-08
cat. E



Matisse L 1614-02
cat. H



Torino L1568-04
cat. G



Nobilis L1340-02
cat. G



Nobilis L1340-05
cat. G



G075-129
cat. G



G075-130
cat. G

Rivestimenti suggeriti
Suggested upholsteries

BOTERO

Design Archirivolto

Tessuti **Fabrics**



G075-310
cat. G



Hollywood 0079-27
cat. Lux



Plushy 8 Neve
cat. Lux



Nobilis L1340-01
cat. G



Tabula 35 Nacre
cat. Lux



Aspen G173-07
cat. K



Master Tender 2049
cat. G

Finiture suggerite
Suggested finishes

BOTERO

Design Archirivolto

Finiture struttura in metallo
Metal structure finishes



N° 89 - cat. B
Palladio



N° 81 - cat. B
Luna



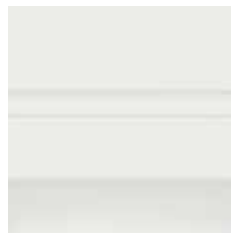
N° 78 - cat. B
Titanio



N° 32 - cat. C
Blu madreperla



N° 72 - cat. C
Magnolia



N° 27 - cat. C
Biancolucido



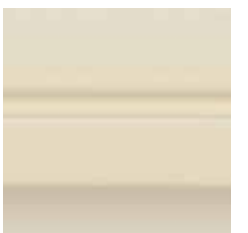
N° 76 - cat. B
Ardesia



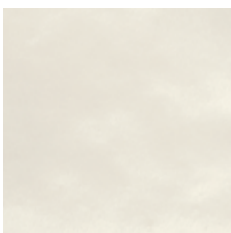
N° 31 - cat. C
Foglia argento melange



N° 60 - cat. B
Noisette



N° 50 - cat. B
Limoges



N° 33 - cat. C
Bianco madreperla



N° G3
oro chiaro opaco

Finitura galvanica
Galvanic Plating

Corte Zari[®] 50₁₉₇₀₂₀₂₀

www.cortezari.it - info@cortezari.it
Via Liguria, 2/4 - 53036 Poggibonsi (Si) Italy
Tel. +39 0577 934447